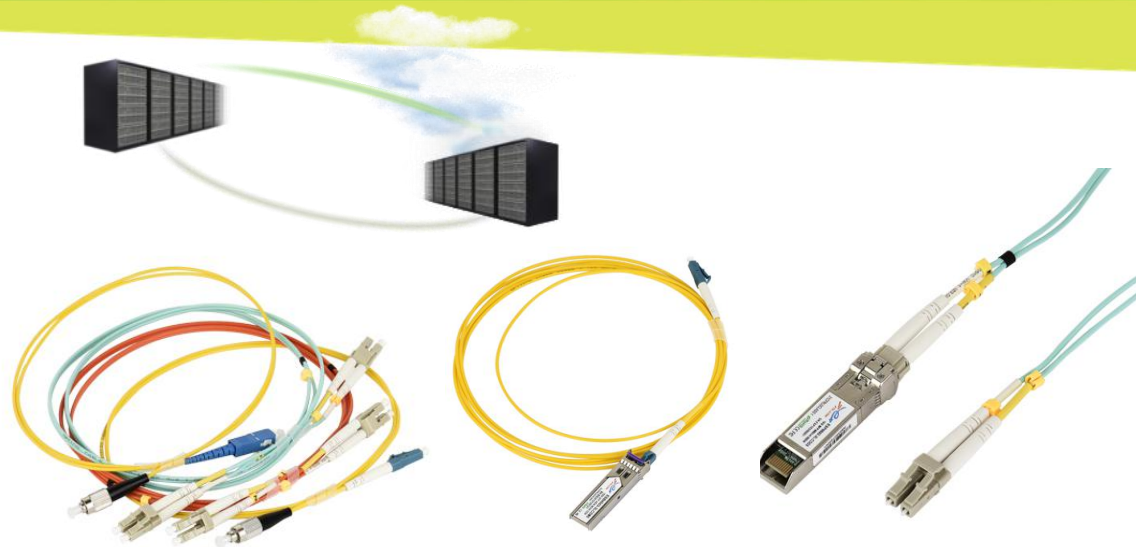


ETU-LINK TECHNOLOGY CO., LTD

The mainstream of optical fiber communication products provider

[Http://www.etulinktechnology.com](http://www.etulinktechnology.com)

[Email:sales@etulinktechnology.com](mailto:sales@etulinktechnology.com)



Products

ETU-LINK TECHNOLOGY CO., LTD

Name: LC/PC-LC/PC MM Patch Cord

Specification:

Insertion loss: $\leq 0.2\text{dB}$ **Return loss:** $\leq -35\text{dB}$ **Repeatable:** 0.1dB (1000)

Temperature range: $-40^{\circ}\text{C}\sim 85^{\circ}\text{C}$

Features: High density applications

Snap-on locking element for easy and secure handling

Suitable for high power applications

Crimp sets for tubes and cables

Multimode 50/125um or 62.5/125um, Simplex & duplex are available

Application:

Data processing network Telecommunication networks CATV

LAN (including FTTH and FTTD)

Standard: Telcordia GR-326-CORE

Core: Simplex / Duplex

Boot (cable) Size : 0.9mm/1.8mm/2.0mm/3.0mm **Boot Color :** White for MM **Cable Color :** Orange

Length: Customized (1/2/3/5/10/15/20/30/40/50meters) **Cable Material:** PVC, LSZH, OFNP



Products

ETU-LINK TECHNOLOGY CO., LTD

Name: ST/PC-LC/PC MM Patch Cord

Specification:

Insertion loss: $\leq 0.2\text{dB}$ **Return loss:** $\leq -35\text{dB}$ **Repeatable:** 0.1dB (1000)

Temperature range: $-40^{\circ}\text{C}\sim 85^{\circ}\text{C}$

Features: High density applications

Snap-on locking element for easy and secure handling

Suitable for high power applications

Crimp sets for tubes and cables

Multimode 50/125um or 62.5/125um ,Simplex & duplex are available

Application:

Data processing network Telecommunication networks CATV

LAN (including FTTH and FTTD)

Standard: Telcordia GR-326-CORE

Core: Simplex / Duplex

Boot (cable) Size : 0.9mm/1.8mm/2.0mm/3.0mm **Boot Color :** White for MM LC/ Black for MM ST **Cable Color :** Orange

Length: Customized (1/2/3/5/10/15/20/30/40/50meters) **Cable Material:** PVC, LSZH, OFNP



Products

ETU-LINK TECHNOLOGY CO., LTD

Name: ST/PC-SC/PC MM Patch Cord

Specification:

Insertion loss: $\leq 0.2\text{dB}$ **Return loss:** $\leq -35\text{dB}$ **Repeatable:** 0.1dB (1000)

Temperature range: $-40^{\circ}\text{C} \sim 85^{\circ}\text{C}$

Features: High density applications

Snap-on locking element for easy and secure handling

Suitable for high power applications

Crimp sets for tubes and cables

Multimode 50/125um or 62.5/125um, Simplex & duplex are available

Application:

Data processing network Telecommunication networks CATV

LAN (including FTTH and FTTD)

Standard: Telcordia GR-326-CORE

Core: Simplex / Duplex

Boot (cable) Size : 0.9mm/1.8mm/2.0mm/3.0mm **Boot Color :** Beige for MM SC/ Black for MM ST **Cable Color :** Orange

Length: Customized (1/2/3/5/10/15/20/30/40/50meters) **Cable Material:** PVC, LSZH, OFNP



Products

ETU-LINK TECHNOLOGY CO., LTD

Name: ST/PC-ST/PC MM Patch Cord

Specification:

Insertion loss: $\leq 0.2\text{dB}$ **Return loss:** $\leq -35\text{dB}$ **Repeatable:** 0.1dB (1000)

Temperature range: $-40^{\circ}\text{C}\sim 85^{\circ}\text{C}$

Features: High density applications

Snap-on locking element for easy and secure handling

Suitable for high power applications

Crimp sets for tubes and cables

Multimode 50/125um or 62.5/125um

Application:

Data processing network Telecommunication networks CATV

LAN (including FTTH and FTTD)

Standard: Telcordia GR-326-CORE

Core: Simplex / Duplex

Boot (cable) Size : 0.9mm/1.8mm/2.0mm/3.0mm

Boot Color : Beige for MM SC/ Black for MM ST **Cable Color :** Orange

Length: Customized (1/2/3/5/10/15/20/30/40/50meters)

Cable Material: PVC, LSZH, OFNP



Products

ETU-LINK TECHNOLOGY CO., LTD

Name: LC/UPC-LC/UPC SM Patch Cord

Specification:

Insertion loss: $\leq 0.2\text{dB}$ **Return loss:** $\leq -50\text{dB(PC)}$ **Repeatable:** 0.1dB (1000)

Temperature range: $-40^{\circ}\text{C}\sim 85^{\circ}\text{C}$

Features: Coupling nut radial track minimizes the rotation needed tapping mate the connector

Any cable length option

Simplex & duplex are available

SM 9/125um G652D / G657A1 /G657A2

Application:

Data processing network Telecommunication networks CATV

LAN (including FTTH and FTTD)

Standard: Telcordia-GR-326 and IEC standards **Core:** Simplex / Duplex

Boot (cable) Size : 0.9mm/1.8mm/2.0mm/3.0mm **Boot color:** White for SM LC **Cable Color:** Yellow

Length: Customized (1/2/3/5/10/15/20/30/40/50meters)

Cable Material: PVC, LSZH, OFNP



Products

ETU-LINK TECHNOLOGY CO., LTD

Name: LC/UPC-SC/UPC SM Patch Cord

Specification:

Insertion loss: $\leq 0.2\text{dB}$ **Return loss:** $\leq -50\text{dB(PC)}$ **Repeatable:** 0.1dB (1000)

Temperature range: $-40^{\circ}\text{C}\sim 85^{\circ}\text{C}$

Features: Coupling nut radial track minimizes the rotation needed tapping mate the connector

Any cable length option

Simplex & duplex are available

SM 9/125um G652D / G657A1 /G657A2

Application:

Data processing network Telecommunication networks CATV

LAN (including FTTH and FTTD)

Standard: Telcordia-GR-326 and IEC standards

Core: Simplex / Duplex

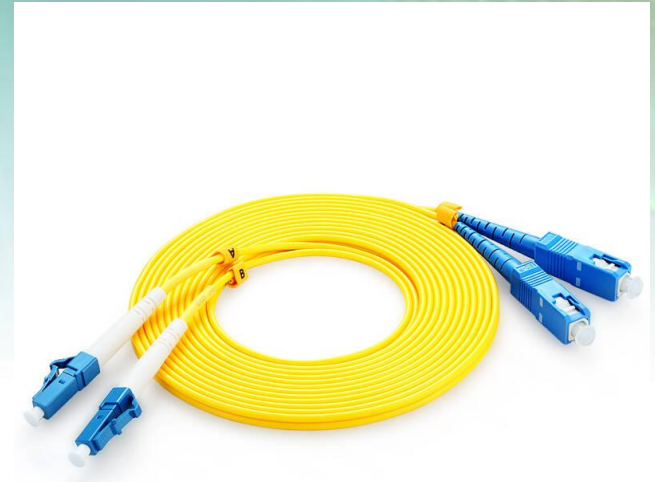
Boot (cable) Size : 0.9mm/1.8mm/2.0mm/3.0mm

Boot color: White for SM LC, Blue for SM SC

Cable Color: Yellow

Length: Customized (1/2/3/5/10/15/20/30/40/50meters)

Cable Material: PVC, LSZH, OFNP



Products

ETU-LINK TECHNOLOGY CO., LTD

Name: SC/UPC-SC/UPC SM Patch Cord

Specification:

Insertion loss: $\leq 0.2\text{dB}$ **Return loss:** $\leq -50\text{dB(PC)}$ **Repeatable:** 0.1dB (1000)

Temperature range: $-40^{\circ}\text{C}\sim 85^{\circ}\text{C}$

Features: Coupling nut radial track minimizes the rotation needed tapping mate the connector

Any cable length option

Simplex & duplex are available

SM 9/125um G652D / G657A1 /G657A2

Application:

Data processing network Telecommunication networks CATV

LAN (including FTTH and FTTD)

Standard: Telcordia-GR-326 and IEC standards

Core: Simplex / Duplex

Boot (cable) Size : 0.9mm/1.8mm/2.0mm/3.0mm

Boot color: Blue for SM SC

Cable Color: Yellow

Length: Customized (1/2/3/5/10/15/20/30/40/50meters)

Cable Material: PVC, LSZH, OFNP



Products

ETU-LINK TECHNOLOGY CO., LTD

Name: ST/UPC-ST/UPC SM Patch Cord

Specification:

Insertion loss: $\leq 0.2\text{dB}$ **Return loss:** $\leq -50\text{dB(PC)}$ **Repeatable:** 0.1dB (1000)

Temperature range: $-40^{\circ}\text{C}\sim 85^{\circ}\text{C}$

Features: Coupling nut radial track minimizes the rotation needed tapping mate the connector

Any cable length option

Simplex & duplex are available

SM 9/125um G652D / G657A1 /G657A2

Application:

Data processing network Telecommunication networks CATV

LAN (including FTTH and FTTD)

Standard: Telcordia-GR-326 and IEC standards

Core: Simplex / Duplex

Boot (cable) Size : 0.9mm/1.8mm/2.0mm/3.0mm

Boot color: Black for SM ST

Cable Color: Yellow

Length: Customized (1/2/3/5/10/15/20/30/40/50meters)

Cable Material: PVC, LSZH, OFNP



Products

ETU-LINK TECHNOLOGY CO., LTD

Name: LC/APC-LC/APC SM Patch Cord

Specification:

Insertion loss: $\leq 0.3\text{dB}$ **Return loss:** $\leq -60\text{dB}$ **Repeatable:** 0.1dB (1000)

Temperature range: $-40^{\circ}\text{C}\sim 85^{\circ}\text{C}$

Features: High density applications

Snap-on locking element for easy and secure handling

Suitable for high power applications

Crimp sets for tubes and cables

Single mode 9/125um G652D / G657A1 /G657A2

Application:

Data processing network Telecommunication networks CATV

LAN (including FTTH and FTTD)

Standard: Telcordia GR-326-CORE

Core: Simplex / Duplex

Boot (cable) Size : 0.9mm/1.8mm/2.0mm/3.0mm

Boot Color : Green for SM

Cable Color : Yellow

Length: Customized (1/2/3/5/10/15/20/30/40/50meters)

Cable Material: PVC, LSZH, OFNP



Products

ETU-LINK TECHNOLOGY CO., LTD

Name: LC/APC-SC/APC SM Patch Cord

Specification:

Insertion loss: $\leq 0.3\text{dB}$ **Return loss:** $\leq -60\text{dB}$ **Repeatable:** 0.1dB (1000)

Temperature range: $-40^{\circ}\text{C}\sim 85^{\circ}\text{C}$

Features: High density applications

Snap-on locking element for easy and secure handling

Suitable for high power applications

Crimp sets for tubes and cables

Single mode 9/125um G652D / G657A1 /G657A2

Application:

Data processing network Telecommunication networks CATV

LAN (including FTTH and FTTD)

Standard: Telcordia GR-326-CORE

Core: Simplex / Duplex

Boot (cable) Size : 0.9mm/1.8mm/2.0mm/3.0mm

Boot Color : Green for SM

Cable Color : Yellow

Length: Customized (1/2/3/5/10/15/20/30/40/50meters)

Cable Material: PVC, LSZH, OFNP



Products

ETU-LINK TECHNOLOGY CO., LTD

Name: SC/APC-SC/APC SM Patch Cord

Specification:

Insertion loss: $\leq 0.3\text{dB}$ **Return loss:** $\leq -60\text{dB}$ **Repeatable:** 0.1dB (1000)

Temperature range: $-40^{\circ}\text{C}\sim 85^{\circ}\text{C}$

Features: High density applications

Snap-on locking element for easy and secure handling

Suitable for high power applications

Crimp sets for tubes and cables

Single mode 9/125um G652D / G657A1 /G657A2

Application:

Data processing network Telecommunication networks CATV

LAN (including FTTH and FTTD)

Standard: Telcordia GR-326-CORE

Boot (cable) Size : 0.9mm/1.8mm/2.0mm/3.0mm

Core: Simplex / Duplex

Boot Color : Green for SM

Cable Color : Yellow

Length: Customized (1/2/3/5/10/15/20/30/40/50meters)

Cable Material: PVC, LSZH, OFNP



Products

ETU-LINK TECHNOLOGY CO., LTD

Name: LC/UPC-FC/UPC SM Patch Cord

Specification:

Insertion loss: $\leq 0.2\text{dB}$ **Return loss:** $\leq -50\text{dB(PC)}$ **Repeatable:** 0.1dB (1000)

Temperature range: $-40^{\circ}\text{C}\sim 85^{\circ}\text{C}$

Features: High density applications

Snap-on locking element for easy and secure handling

Suitable for high power applications

Crimp sets for tubes and cables

Single mode 9/125um G652D / G657A1 /G657A2

Application:

Data processing network Telecommunication networks CATV

LAN (including FTTH and FTTD)

Standard: Telcordia GR-326-CORE

Core: Simplex / Duplex

Boot (cable) Size : 0.9mm/1.8mm/2.0mm/3.0mm

Boot Color : Green for SM

Cable Color : Yellow

Length: Customized (1/2/3/5/10/15/20/30/40/50meters)

Cable Material: PVC, LSZH, OFNP

